

PERSONAL NAVIGATOR

FRIDAY, DECEMBER 6, 2013

Sunrise: 6:54 a.m. Sunset: 5:35 p.m.
Evening Attire: Optional Dress Up

Friday: Sunny High: 77°F/25°C
Saturday: Partly Sunny High: 77°F/25°C

DAY AT SEA


DISNEY CRUISE LINE PRESENTS



WALT DISNEY THEATRE
Deck 4, Forward,
6:15 p.m. & 8:30 p.m.

As a courtesy to all Guests, we kindly advise that the saving of seats is **not** permitted in the Walt Disney Theatre.



 Assistance available at the entrance to the Walt Disney Theatre 30 minutes prior to show time.

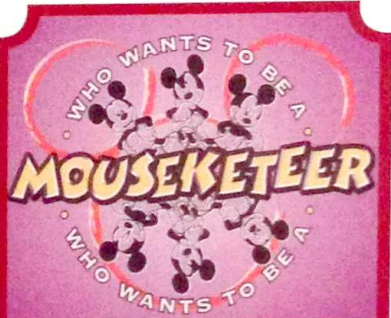
Disney MAGIC Fun Facts

Tonnage: 84,000
Length Overall: 984 Feet
Ship's Registry: *The Bahamas*

Important Dates

Keel Laid: *October 31, 1996*
Launch Date: *April 12, 1997*
Inaugural Cruise: *July 30, 1998*

- The Magic was built by a process called Jumboisation (in 2 separate sections) in Italy at the Fincantieri Maghera Shipyard (stern) and the Fincantieri Ancona Shipyard (bow). The joint of the ship is just in front of Lumiere's.
- The anchor of the Disney Magic weighs 28,200 lbs (12,802.8kg) - the same weight as three elephants.
- Over 50 nationalities make up the 960 Crew Members on board.
- Sorcerer Mickey stands proudly 10 ft tall on the bow of the ship. There are other characters in the artwork around him.
- Goofy hangs 20 ft tall, painting the finishing touches on the stern.



GAME SHOW

Your chance to get into the world famous hot seat and win an exclusive prize in our version of the well known television game show.

D Lounge,
Deck 4, Midship,
7:30 p.m. & 9:30 p.m.

Don't Miss:

Jack-Jack's Incredible Diaper Dash
Lobby Atrium, Deck 3, Midship - 11:30 a.m.
Calling all baby Cruisers! It's time to take to the mat to see who's the fastest crawler of the seven seas! Register your baby 15 minutes prior to the big race.

Mickey 200
Fathoms, Deck 3, Forward - 12:30 p.m.
Don't eat your vegetables... race them in this wild and wacky charge to the finish line. May the best veggie win! (Limited Availability)

Deck the Deck Tropical Holiday Party
Deck Stage, Deck 9, Midship - 4:30 p.m.
Join some of your favorite Disney friends for our annual, fun-filled seasonal party, Deck the Deck!

Disco Legends (18+)
Fathoms, Deck 3, Forward - 10:45 p.m.
Put on your platform shoes and hit the dance floor as we catch a disco fever. Our '70s dance party will have you spinning like a disco ball.

Disney CRUISE LINE. PORT ADVENTURES

Tomorrow we head to Key West with its beautiful beaches, pristine natural settings the most fetching of old American architecture. Be sure to visit the Port Adventures Desk, Deck 3, Midship for any questions.

DINNER MENU

Animator's Palate: Show Dinner
Carioca's: South American Dinner
Lumiere's: French Dinner

DRINK OF THE DAY

High Tide (Alcoholic)
Lava Smoothie (Non Alcoholic)

IMPORTANT NUMBERS

Fire/Security: 7-3001
Medical Emergency: 7-3000
Health Center: 7-1923

FUN FOR ALL AGES HIGHLIGHTS



JACK-JACK'S INCREDIBLE DIAPER DASH
Lobby Atrium, Deck 3, Midship - 11:30 a.m.
 Calling all baby Cruisers! It's time to take to the mat to see who's the fastest crawler of the seven seas! Register your baby 15 minutes prior to the big race.

MICKEY 200

Fathoms, Deck 3, Forward - 12:30 p.m.
 Don't eat your vegetables... race them in this wild and wacky charge to the finish line. May the best veggie win! (Limited Availability)

PORT & SHOPPING TALK

Buena Vista Theatre, Deck 5, Aft - 1:15 p.m.
 Join your Port and Shopping Guide to learn about the incredible shopping ashore this cruise!

SO YOU THINK YOU KNOW YOUR FAMILY?

D Lounge, Deck 4, Midship - 2:45 p.m.
 This fun-filled family game show is always full of surprises. Find out how well you know, or don't know your family!

DECK THE DECK TROPICAL HOLIDAY PARTY

Deck Stage, Deck 9, Midship - 4:30 p.m.
 Join some of your favorite Disney friends for our annual, fun-filled seasonal party, Deck the Deck!

PLAYHOUSE D LOUNGE

D Lounge, Deck 4, Midship - 5:00 p.m.
 Calling our youngest of cruisers! Here is a special playtime that is just for you. Come meet new friends; and join in on the fun as your Cruise Staff team takes you through interactive activities made just for you!

OFFICER PIN TRADING

Preludes, Deck 4, Forward - 7:15 p.m.
 Come trade pins with the officers of the Disney Magic.

DISNEY DISCO

Promenade Lounge, Deck 3, Aft - 11:30 p.m.
 Join your Cruise Staff as they play some of your favorite Disco tunes.

ADULT ACTIVITY HIGHLIGHTS



SENSES SPA FITNESS CLASSES & SEMINARS
Sunrise Stretch - Senses Spa Fitness Center - 7:30 a.m.
Body Sculpt Boot Camp - Senses Spa Fitness Center - 8:00 a.m.
Salon Makeover - Senses Spa & Salon - 10:00 a.m.
Introduction to Acupuncture - Keys - 11:15 a.m.
Detox for Health & Weight Loss - Senses Spa & Salon - 1:00 p.m.
How to Increase Your Metabolism - Senses Spa & Salon - 2:15 p.m.
Group Cycling - Senses Spa Fitness Center - 4:00 p.m.

TASTING CLASSES

Wine Tasting (21+) - Keys - 12:30 p.m.
Martini Tasting (21+) - Keys - 2:30 p.m.
Whiskey Tasting (21+) - Cove Cafe - 10:30 p.m.
 Please make reservations for tastings at Guest Services for a nominal fee. Tasting Seminars are only for Guests 21 and Older.



CLUB 18*21 - LUNCH
Lumiere's, Deck 3, Midship - 12:15 p.m.
CLUB 18*21 - XBOX CHALLENGE
O'Gills Pub, Deck 3, Forward - 5:00 p.m.
CLUB 18*21 - MIXER
O'Gills Pub, Deck 3, Forward - 10:00 p.m.



ESPN DREAM TEAM DRAFT DAY - BASEBALL
O'Gills Pub, Deck 3, Forward - 3:00 p.m.
 Play ball! Join the "Commissioner" and engage in this interactive fantasy baseball draft unlike anything you've ever seen! Can YOU draft the greatest baseball team of All-Time?



DISCO LEGENDS
Fathoms, Deck 3, Forward - 10:45 p.m.
 Put on your platform shoes and hit the dance floor as we catch a disco fever. Our '70s dance party will have you spinning like a disco ball.



DIAMOND JACKPOT BINGO

Promenade Lounge, Deck 3, Aft
Card Sales - 10:30 a.m.
Game Starts - 10:45 a.m.

Join us for 4 cash prize games and your chance to win a Diamond Pendant! Everyone attending will also receive a voucher to collect a free Diamonds International charm bracelet!

\$5,000 MEGA JACKPOT BINGO

Fathoms, Deck 3, Forward
Card Sales - 3:30 p.m.
Game Starts - 3:45 p.m.

Don't miss your chance to take home big money! 4 CASH prize games and great raffle prizes to be won! Complete the fourth game in 46 numbers or less and win the \$5,000 Mega Jackpot!

YOUTH ACTIVITIES HIGHLIGHTS

DINE & PLAY

A convenience for families dining at 8:15 p.m., our Youth Activities Counselors will be available at 9:15 p.m. at the entrance of Lumière's, Carioca's and Animator's Palate dining rooms to bring registered children to join the fun in the Oceaneer Club and Oceaneer Lab.



Deck 5, Aft (7-5864) 8:00 a.m. - 11:00 p.m.

Infants and Toddlers can enjoy toys and activities at It's a Small World Nursery. Reservations are first come, first served so please stop by!



Deck 5, Midship (7-1440) 9:00 a.m. - 12:00 mid
(3-12 years old)

ALOHA LUAU

4:45 p.m.

It's party time, Hawaiian style! Come join us for a Luau experience and learn how to dance like Lilo & Stitch.

MARVEL AVENGERS ACADEMY

7:15 p.m.

Kids assemble! Join Nick Fury and S.H.I.E.L.D Agents at Disney's Oceaneer Club and train to be the next generation of super heroes.



Deck 5, Midship (7-1445) 9:00 a.m. - 12:00 mid
(3-12 years old)

HATS OFF TO PETER PAN

12:15 p.m.

You'll believe you can fly. All it takes is faith, trust, and pixie dust and a special visit from Peter Pan! Rediscover the magic of Neverland!

SUPER SLOPPY SCIENCE

4:00 p.m.

Join Professor Make-O-Mess in some of the most extreme experiments you will ever see in the world of Super Sloppy Science!



Deck 2, Midship (7-5816) 10:00 a.m. - 1:00 a.m.
(11-14 years old)

GENDER WARS

12:00 p.m.

It's the battle of girls vs. boys... Who will dominate to win the ultimate battle?

SHIP FACTOR

4:00 p.m.

Ready for one of the toughest challenge competitions onboard?



Deck 11, Midship (7-18517) 10:00 a.m. - 2:00 a.m.
(14-17 years old)

ZOMBIFIED

1:00 p.m.

A big movie producer is looking for zombies to help him film the finale to his latest masterpiece, *Zombified*.

PUMP IT UP

9:00 p.m.

Join us in the Fitness Center for a Teen Only workout. Meet in Vibe to join in!

BUENA VISTA THEATRE

Today's Movies

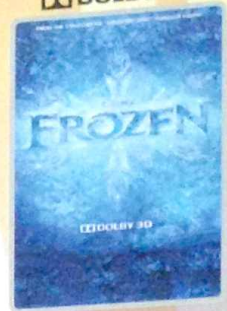


8:30 a.m. & 10:30 p.m.
Duration: 1 hr 48 mins
Rating: PG

DOLBY 3D



2:30 p.m.
Duration: 1 hr 51 mins
Rating: PG-13



10:45 a.m.
Duration: 1 hr 48 mins
Rating: PG

DOLBY 3D



5:45 p.m. & 8:15 p.m.
Duration: 1 hr 43 mins
Rating: G



VARIETY SHOW

Featuring the Physical Comedy of Max Winfrey, as he entertains you in this cabaret style show.

Fathoms,

Deck 3, Forward,

7:30 p.m. (Families)

10:15 p.m. (Adults)



DANCE PARTY

Come join us as we count down to a brand new year while taking you on a journey of great musical genre in history!

D Lounge,

Deck 4, Midship,

10:15 p.m.

YOUTH ACTIVITIES OPEN HOUSE

Open House is an opportunity for all to come and participate in a variety of exciting activities and free time in the Oceaneer Club, Oceaneer Lab, Edge, Vibe, and It's a Small World Nursery throughout the cruise. During these times secured programming will still be offered in the other venues for those looking to check their children into care.

Vibe: 10:00 a.m. - 11:00 a.m.

Edge: 10:00 a.m. - 11:00 a.m.

Disney's Oceaneer Lab: 10:00 p.m. - 12:00 mid

Disney's Oceaneer Club: 9:00 a.m. - 10:30 a.m.

MORE TO ENJOY WHILE ONBOARD



PLAN YOUR NEXT GETAWAY NOW

Our 3- and 4-night Bahamian Cruises are a perfect way to get an instant tropical recharge! Departing from Miami or Port Canaveral, most Bahamian cruises include a stop at Disney's private island, Castaway Cay. Visit the Future Cruise Sales Desk today and ask about our special onboard booking offer.



DISNEY VACATION CLUB

Visit the Disney Vacation Club information desk and ask us about show times where you will learn how to turn every vacation into the vacation of a lifetime.



PORT & SHOPPING INFORMATION

Port and Shopping Show at 1:15 p.m. in the Buena Vista Theatre, Deck 5 Aft. Everything will be covered from Diamonds to T-Shirts, Watches to Tanzanite. A free Charm Bracelet and chance to win a Diamond Pendant for all in attendance! The first 150 Guests will receive a Ship Charm and a Savings Ashore Coupon Book. **Diamond, Gemstone and Watch Seminar** in Promenade Lounge, Deck 3 Aft at 3:30 p.m. Learn what makes a Diamond sparkle, the rarity of Ammolite and why Alexandrite changes color! She will give you insider tips on shopping for gemstones in Key West. Free Tanzanite Stud Earrings and a Raffle to win a Tanzanite Pendant!

ONBOARD AIRLINE CHECK IN

This will be your final chance to enroll for Onboard Airline Check In. Stop by the Guest Services Desk, Deck 3, Midship by 12:00 p.m. today.

SURF AT SEA

\$0.75 per minute or save money by buying blocks of time. \$27.50 for 50 minutes, \$40.00 for 100 minutes and \$75.00 for 250 minutes. Wireless information sheets are available at Guest Services, Deck 3, Midship and the Internet Cafe, Deck 3, Aft. Due to the technology involved and satellite connectivity, the onboard internet service will be noticeably slower than you may be accustomed to and might at times be interrupted or unavailable.

QUARTER MASTERS ARCADE

Where can you fly a fighter jet, save a Princess, race NASCAR's greatest and beat bad guys all before dinner? Quarter Masters is on Deck 9, Midship, where the champions play.



Tomorrow we head to Key West with its beautiful beaches, pristine natural settings and an Old Town boasting some of the most fetching of old American architecture. Experience Key West like locals do on the Key Lime Bike tour or surround yourself in the serenity of butterflies during the Key West Butterfly & Nature Conservatory Aquarium.

Stop by the Port Adventures Desk located on Deck 3 Midship with any questions.

SHOPPING

H2O BATH COLLECTION

Treat yourself to the ultimate indulgence with H2O bath products. H2O offers shampoo, conditioner, lip balm, hydrating body lotion and after sun care. Available in Whitecaps, Deck 4, Midship.

COMMEMORATIVE DISNEY MAGIC SOUVENIRS

Visit Mickey's Mainsail and Whitecaps for your final chance to commemorate your voyage on the reimagined Disney Magic with Disney Cruise Line® merchandise featuring the new Disney Magic logo. Deck 4, Forward.

SOPHIA FIORI GUESS THE CARAT WEIGHT

Whoever guesses closest wins a 5 carat Midnight Sapphire or a pair of Midnight Sapphire Stud Earrings! 5:00 pm - 11:30 pm, Winners Announced tonight at 7:30 pm. Must be present to win. Whitecaps, Deck 4, Forward.

CAPTAIN'S SIGNING

Don't miss your chance to meet the Master of the Disney Magic! Stop by Whitecaps today at 12:15pm where you can have your cruise mementos signed by our Captain. Deck 4, Forward.

SILENT ART AUCTION

Original inks, line art, lithographs or will it be prints? Make sure you stop by the art gallery to see which pieces are up for silent auction today! The silent auction will take place from 11:00 a.m. to 2:00 p.m. Art Gallery, Deck 4, Midship.

OFFICER PIN TRADING

Come and trade pins with the officers of the Disney Magic at 7:15 p.m. in Preludes, Deck 4, Forward.



PAMPER PACKAGE

Full Body Massage ~ Mini Booster Facial
Indian Scalp Massage ~ Foot reflex
75 Minutes for \$149

Deck 9, Forward - Phone : 7-1465

SOFIA FIORI

Industry leaders in vivid colored diamonds, and more specifically Caribbean blue diamonds – one of the single most popular purchases at sea because it reminds everyone of the colors of the breathtaking ocean!

Whitecaps, Deck 4, Forward

Sophia Fiori



GET THE PICTURE!

Get all your stateroom photos on a disc for one great price!
Update and get all your printed photos too!

**Please note that photos are available for viewing on our interactive photo kiosks approximately five hours after being taken and are only available for purchase during this cruise.*

IMPORTANT INFORMATION

Security Notice

All Guests (including Children) who wish to disembark or embark the ship are required to present their Key to the World card at the gangway. A photo ID is also required for those Guests who are 18 years of age or older. Guests under the age of 18 are required to have a parent, guardian or other responsible adult sign an authorization form at the Guest Service Desk if they wish to go ashore unaccompanied or with any adult from another stateroom.

Cold and Flu Reminder

Please wash hands frequently and thoroughly, particularly before meals. Contact the Health Center by dialing 7-1923, should anyone in your party become ill.

Inclement Weather

For the safety of all Guests, outdoor events may be changed due to unforeseen weather conditions.

Corridor Quiet Hours

As a courtesy to all our Guests, please recognize quiet hallway hours from 10:00 p.m. till 8:00 a.m.

Environmental Message

With Disney's commitment to the Environment please refrain from throwing anything over the Ship's side. Thank you.

No Reserved Seats Policy

As a courtesy to all Guests we kindly advise that the saving of seats is not permitted in the Walt Disney Theatre, and the saving of the sun loungers is not permitted on Deck 9 and 10. Items left unattended will be returned to lost and found at Guest Services, Deck 3, Midship.

Smoking

For the comfort of our guests, the following areas are designated as smoking areas:
• Deck 10 forward, Starboard side
• Deck 9, forward, Starboard side at Quiet Cove
• Deck 4, aft, port side from 6:00 p.m. to 6:00 a.m. only (all of Deck 4 is non-smoking from 6:00 a.m. to 6:00 p.m.)
Smoking is prohibited inside all guest staterooms and on stateroom verandahs. Guests found smoking in their staterooms or on their verandahs will be charged a \$250 stateroom recovery fee.

Sunscreen Advisory

Don't forget to apply sunscreen and insect repellent when going ashore.

Walt Disney Theatre

Theatrical performances may use artificial fog, strobe lights, pyrotechnics and other special effects. For the safety of our performers and the comfort of those around you, the use of any photography or video recording device or any electronic equipment is prohibited.

Verandah Safety

Please do not leave any combustible materials on your balcony when not present in your stateroom for safety reasons.

Morning	8:30	8:45	9:00	9:15	9:30	9:45	10:00	10:15	10:30	10:45	11:00	11:15	11:30	11:45	12:00	12:15	12:30	12:45	1:00	1:15	1:30			
FUNNEL VISION	A Bug's Life (G) Funnel Vision							Brave (PG) Funnel Vision							Movie Challenge Poolside Funnel Vision			Movie - As Chosen By You Funnel Vision						
BUENA VISTA THEATRE	Frozen (PG) Duration: 1 Hour 48 Minutes								Frozen DOLBY 3D (PG) Duration: 1 Hour 48 Minutes											Port & Shopping Talk Buena Vista Theatre				
CHARACTER	Princess Gathering Lobby Atrium				Santa Claus Preludes				Jake Dk 4, Mid				Cpt. Hook Dk 4, Mid				Donald Gazebo, Dk 9			Captain America Preludes		Princess Gathering Lobby Atrium		
FUN FOR ALL AGES	Disney Trivia Promenade Lounge		Animation - Goofy Animator's Palate				Bingo Pre Sales		Diamond Jackpot Promenade Lounge				Captain's Signing Whitecaps					The Generation Game D Lounge						
	Game Show: The Wheel Promenade Lounge				Holiday Crafts Animator's Palate		Cruisin' for Trivia O'Gills Pub		Disney Vacation Club Group Preview D Lounge					Port & Shopping Talk Buena Vista Theatre										
ADULTS	Friends of Bill W. Animator's Palate			Crafts - Tile Coasters O'Gills Pub			70's Music Trivia O'Gills Pub			Club 18*21 - Lunch Lumiere's			Singles' Lunch Lumiere's			80's Music Trivia O'Gills Pub								
VIBE 14-17 YEARS OLD	Youth Activities Open House						GOTCHA			Crowning the Couch Potato			Zombified											
EDGE 11-14 YEARS OLD	Youth Activities Open House						Sports Deck Fun			Gender Wars			Holiday Animation Cells											
OCEANEER LAB 3-12 YEARS OLD					Flubber				Hats Off to Peter Pan				Lunch											
OCEANEER CLUB 3-12 YEARS OLD	Youth Activities Open House				Heffalump Hunting				Mouseketeer Training				Lunch											

Symbol for activities that will be repeated during the cruise

Afternoon	1:45	2:00	2:15	2:30	2:45	3:00	3:15	3:30	3:45	4:00	4:15	4:30	4:45	5:00	5:15	5:30	5:45	6:00	6:15	6:30	6:45						
FUNNEL VISION	Movie - As Chosen By You Funnel Vision					Tangled (PG) Funnel Vision					Deck The Deck Funnel Vision					Cars (G) Funnel Vision											
BUENA VISTA THEATRE	Thor: The Dark World DOLBY 3D (PG-13) Duration: 1 Hour 51 Minutes										Monsters University DOLBY 3D (G) Duration: 1 Hour 43 Minutes																
CHARACTER	Goofy Gazebo, Dk 9					Captain America Preludes					Deck The Deck Deck Stage					Mickey Dk 5, Mid					Minnie Dk 5, Mid						
FUN FOR ALL AGES	Disney Tunes Trivia Promenade Lounge			So You Think You Know Your Family? D Lounge				Bingo Pre Sales						Live Music with Carlos & Maria Lobby Atrium						Walt Disney Theatre							
	Magic Quest Fathoms		Crafts: 3D Crafts Promenade Lounge			Diamond, Gemstone & Watch Seminar Promenade Lounge				Jewish Sabbath Fathoms																	
ADULTS	Disney Animation Animator's Palate			ESPN Dream Team Draft Day - Baseball O'Gills Pub				Art of The Theme Show Tour Pre-Book at Guest Services			Club 18*21 - Xbox Challenge O'Gills Pub																
	How to Increase Your Metabolism Senses Spa & Salon				LIVE Music with David Kenny Quiet Cove Pool						Singles' Mingle Cove Cafe																
VIBE 14-17 YEARS OLD	Zombified				Scavenger Hunt				Gingerbread Man Decorating				ESPN Dream Team Draft Day - Baseball				Holiday Animation Cells										
EDGE 11-14 YEARS OLD	Picture This				Scavenger Hunt				Ship Factor				Youth Activities Open House														
OCEANEER LAB 3-12 YEARS OLD	Anyone Can Cook				Super Sloppy Science				Animation Antics				Dinner														
OCEANEER CLUB 3-12 YEARS OLD	Youth Activities Open House				Aloha Luau				Dinner																		
	Become Iron Man!				Once Upon a Time																						

FOLD ->

Fold along the dotted lines and take me with you so you don't miss any of the fun!

Evening	7:00	7:15	7:30	7:45	8:00	8:15	8:30	8:45	9:00	9:15	9:30	9:45	10:00	10:15	10:30	10:45	11:00	11:15	11:30	11:45	12:00				
FUNNEL VISION	Cars (G) Funnel Vision					The Muppets (PG) Funnel Vision					Remember the Titans (PG) Funnel Vision														
BUENA VISTA THEATRE	Monsters University 3D Duration: 1 Hour 43 Minutes					Monsters University DOLBY 3D (G) Duration: 1 Hour 43 Minutes										Frozen (PG) Duration: 1 Hour 48 Minutes									
CHARACTER	Goofy Dk 5, Mid					Mickey Dk 5, Mid					Tiana Dk 5, Mid					Mickey Dk 5, Mid					Goofy Dk 5, Mid				
											Donald Lobby Atrium (P)					Minnie Lobby Atrium (P)					Cinderella Lobby Atrium (P)				
FUN FOR ALL AGES	Officer Pin Trading Preludes							Walt Disney Theatre						Family Superstar Karaoke D Lounge			Live Music with Drem Promenade Lounge			Live Music with Drem Promenade Lounge			Disney Disco Promenade Lounge		
	Variety: Max Winfrey Fathoms				Live Piano with Nick Messina Keys				Live Music with Carlos & Maria Fathoms				Variety: Max Winfrey Fathoms				70's Remix with Guest DJ A.K. Vybz Fathoms				Live Piano with Nick Messina Keys				
ADULTS	Live Guitar with David Kenny O'Gills Pub					David Kenny Live O'Gills Pub					Club 18*21 - Mixer O'Gills Pub			Fathoms			Live Piano with Nick Messina Keys								
VIBE 14-17 YEARS OLD	Youth Activities Open House						Sports Deck Fun			Pump It Up			Bring It!			Gender Wars			Holiday Formal						
EDGE 11-14 YEARS OLD	That's Hilarious						Sports Deck Fun			Disney Cruise Line Trivia			Holiday Party												
OCEANEER LAB 3-12 YEARS OLD	Around the World in 7 days					Who Wants To Be A Mouseketeer			Holiday Animation Cells			Youth Activities Open House			Piston Cup Challenge										
OCEANEER CLUB 3-12 YEARS OLD	Marvel Avengers Academy				Memory Wall		Aladdin's Fun Adventures		Camp Out																

FOLD ->

IN THE SPARKLE SERIES

HELP OF GUEST

CREATE A BOWEN SERIES

OPEN HOUSE

FRIDAY, DECEMBER 6, 2013 - DAY AT SEA

BUENA VISTA THEATRE

DD DOLBY 3D **DD DOLBY 3D** **DD DOLBY 3D**



8:30 a.m. & 10:30 p.m.
Duration:
1 hr 48 mins
Rating: PG



10:45 a.m.
Duration:
1 hr 48 mins
Rating: PG



2:30 p.m.
Duration:
1 hr 51 mins
Rating: PG-13



5:45 p.m. & 8:15 p.m.
Duration:
1 hr 43 mins
Rating: G

Character Appearances

PRINCESS GATHERING
Lobby Atrium
9:00 a.m. & 1:15 p.m.

SANTA CLAUS
Preludes
9:30 a.m. & 11:00 a.m.

JAKE - THE NEVERLAND PIRATE
Deck 4, Midship - 10:30 a.m. & 11:30 a.m.

CAPTAIN HOOK
Deck 4, Midship - 11:00 a.m.

DONALD DUCK
Gazebo, Dk 9 - 12:30 p.m.
Lobby Atrium (P) - 9:30 p.m.

MICKY MOUSE
Gazebo, Dk 9 - 1:00 p.m.
Deck 5, Midship - 5:30 p.m.,
7:45 p.m. & 10:00 p.m.

DAISY DUCK
Gazebo, Dk 9 - 1:30 p.m.

CAPTAIN AMERICA
Preludes
1:00 p.m. & 3:30 p.m.

GOOFY
Gazebo, Dk 9 - 3:00 p.m.
Deck 5, Midship
7:15 p.m. & 10:45 p.m.

PLUTO
Gazebo, Dk 9 - 3:30 p.m.

DECK THE DECK
Deck Stage - 4:30 p.m.

MINNIE MOUSE
Deck 5, Midship - 6:00 p.m.
Lobby Atrium (P) - 10:15 p.m.

PRINCESS TIANA
Deck 5, Midship - 9:30 p.m.

CINDERELLA
Lobby Atrium (P) - 10:45 p.m.

Don't forget your Camera to capture those Magical Moments!
Check here each day for Character appearances.

For detailed Character appearance information see the Character Information Board in the Lobby Atrium. Meet-and-Greets will be advertised for the length of time the line will be open. To avoid disappointment, please meet at start time of appearances.

YOUTH ACTIVITIES THEMED EXPERIENCES

CLUBHOUSE SERIES
focuses on movement and features content which appeals to younger children.

STORYBOOK SERIES
is designed with a strong connection to the Disney classic stories.

JUMP UPI SERIES
includes large group games & movement-oriented activities.

CREATE & INVENT SERIES
will have a tactile focus allowing children to create and admire their work.

IN THE SPOTLIGHT SERIES
focuses on children's stage presence with lots of activities and enthusiasm.

WOLVES IN THE SERIES
are less active, but will challenge children with problem/solutions-based activities.

YOUTH ACTIVITIES OPEN HOUSE
Activities for families, adults and children of all ages to enjoy together.

SHIP DIRECTORY

YOUTH ACTIVITIES

DISNEY'S OCEANEER CLUB	9:00 AM - 12:00 MID
DISNEY'S OCEANEER LAB	9:00 AM - 12:00 MID
EDGE	10:00 AM - 1:00 AM
IT'S A SMALL WORLD NURSERY	8:00 AM - 11:00 PM
VIBE	10:00 AM - 2:00 AM

POOLS

*Children under 12 years of age must have adult supervision in all pools.

AQUADUNK	10:00 AM - 9:00 PM
AQUALAB	10:00 AM - 9:00 PM
GOOFY'S POOL	9:00 AM - 6:00 PM
NEPHEW'S SPLASH ZONE	8:00 PM - 10:00 PM
QUIET COVE POOL	9:00 AM - 6:00 PM
TWIST 'N' SPOUT	6:00 AM - 12:00 MID
	10:00 AM - 9:00 PM

RECREATION

PORT ADVENTURES DESK	10:00 AM - 12:00 PM
SENSES FITNESS CENTER	2:00 PM - 5:00 PM
WIDE WORLD OF SPORTS DESK	7:00 PM - 8:30 PM
	6:30 AM - 10:00 PM
	24 HOURS

GENERAL INFORMATION

BUENA VISTA THEATRE	SHOWTIMES
DISNEY VACATION CLUB DESK	9:00 AM - 11:00 AM
	2:30 PM - 10:00 PM
FUTURE CRUISE SALES DESK	9:30 AM - 12:00 PM
	2:30 PM - 6:00 PM
	7:30 PM - 8:30 PM
	9:30 PM - 10:30 PM

FUNNEL VISION	SHOWTIMES
GUEST SERVICES	24 HOURS
MEDICAL HEALTH CENTER	9:30 AM - 11:00 AM
	4:30 PM - 7:00 PM
PORT & SHOPPING DESK	7:30 PM - 8:30 PM
PRELUDES	5:30 PM - 8:30 PM
QUARTER MASTERS (ARCADE)	24 HOURS
SENSES SPA AND SALON	8:00 AM - 10:00 PM
SHUTTERS PHOTO GALLERY	10:00 AM - 12:00 PM
	5:00 PM - 11:00 PM

WALT DISNEY THEATRE	SHOWTIMES
	9:30 AM - 11:00 PM
MICKY'S MAINSAIL	10:00 AM - 4:00 PM
QUACKS	11:00 AM - 11:00 PM
SEA TREASURES	11:00 AM - 2:00 PM
VISTA GALLERY	4:00 PM - 10:00 PM
WHITECAPS	9:30 AM - 11:00 PM

SHOPPING

DISNEY'S OCEANEER CLUB	9:00 AM - 12:00 MID
DISNEY'S OCEANEER LAB	9:00 AM - 12:00 MID
EDGE	10:00 AM - 1:00 AM
IT'S A SMALL WORLD NURSERY	8:00 AM - 11:00 PM
VIBE	10:00 AM - 2:00 AM

IMPORTANT NUMBERS
Fire/Security: 7-3001
Medical EMERGENCY: 7-3000
Health Center: 7-1923

DINING & LOUNGES

BREAKFAST

CABANAS	DECK 9, AFT	7:30 AM - 11:30 AM
DAISY'S DE-LITES	DECK 9, AFT	7:00 AM - 9:30 AM
LUMIERE'S (A-LA CARTE)	DECK 3, MID	8:00 AM - 9:30 AM

LUNCH

CABANAS	DECK 9, AFT	11:30 AM - 3:00 PM
DAISY'S DE-LITES	DECK 9, AFT	11:00 AM - 6:00 PM
LUMIERE'S	DECK 3, MID	12:00 PM - 1:30 PM
PETE'S BOILER BITES	DECK 9, AFT	11:00 AM - 6:00 PM
PINOCCHIO'S PIZZERIA	DECK 9, MID	11:00 AM - 6:00 PM

DINNER

ANIMATOR'S PALATE	DECK 4, AFT	5:45 PM & 8:15 PM
CABANAS TABLE SERVICE	DECK 9, AFT	6:30 PM - 8:30 PM
CARIOCA'S	DECK 3, AFT	5:45 PM & 8:15 PM
LUMIERE'S	DECK 3, MID	5:45 PM & 8:15 PM
PALO (FOR RESERVATIONS CALL 7-8843)	DECK 10, AFT	6:00 PM - 8:30 PM
PETE'S BOILER BITES	DECK 9, AFT	6:00 PM - 10:00 PM

LATE NIGHT (BAR/CLUB)

O'GILLS PUB	DECK 3, FWD	10:45 PM - 11:45 PM
PINOCCHIO'S PIZZERIA	DECK 9, MID	9:30 PM - 12:00 MID
PROMENADE LOUNGE	DECK 3, AFT	10:45 PM - 11:45 PM

ADDED FEATURES

EYE SCREAM	DECK 9, AFT	11:00 AM - 11:00 PM
FROZONE TREATS	DECK 9, AFT	11:00 AM - 10:00 PM
BEVERAGE STATION	DECK 9, AFT	24 HOURS
ROOM SERVICE	DIAL 7-4330	24 HOURS

ENTERTAINMENT - LOUNGES - BARS

Adults must be 21 and older to consume alcoholic beverages.

AFTER HOURS	DECK 3, FWD	(AFTER 9:00 PM, ADULTS ONLY)
COVE CAFE (18+)	DECK 9, MID	7:00 AM - 12:00 MID
FATHOMS (18+)	DECK 3, FWD	7:00 PM - 2:00 AM
INTERNET CAFE	DECK 3, AFT	24 HOURS
KEYS (18+)	DECK 3, FWD	5:30 PM - 12:30 AM
O'GILLS PUB (18+)	DECK 3, FWD	12:00 PM - 12:30 AM
PRELUDES	DECK 4, FWD	5:30 PM - 8:30 PM
PROMENADE LOUNGE	DECK 3, AFT	9:00 AM - 12:00 MID
PINOCCHIO'S PIZZERIA	DECK 9, MID	9:30 AM - 12:00 MID
SIGNALS (18+)	DECK 9, FWD	10:00 AM - 10:00 PM
D LOUNGE	DECK 4, MID	SHOWTIMES

Public Health Advisory: Consuming raw or undercooked meats, poultry, seafood, shellfish, or eggs may increase your risk for foodborne illness, especially if you have certain medical conditions.

PRINCESS GATHERING

Don't miss your chance to see this Royal gathering today in the Lobby Atrium and don't forget your camera to capture those magical moments.

9:00 a.m. & 1:15 p.m.

